



# mcs printtec Newsletter



This newsletter shall inform you about the latest news in the market of rotogravure cylinder manufacturing, about inventions, developments, new products we have evaluated and about our activities for your cylinder manufacturing process. Take the challenge!

## New control system retrofit for a variety of machines

Control system retrofit realised in perfection.



Retrofitted control system in operation

### Persuasive experiences with the new machine control system retrofit.

The past year, we have already equipped a dozen of production machines with the new generation control system, developed by our company, in cooperation with a well known software developing supplier.

The control system retrofit of your production machines – stand-alone devices or fully automatic production lines – allows us via internet access, to trouble-shoot or analyse the current state of your production equipment for any interruption or breakdown error from and to any location on the globe. This equipment upgrade (in our company in Switzerland or on-site) is offered for any equipment related with the manufacturing of gravure cylinders: plating-, tooling-, grinding-, polishing- machines, cylinder milling machines Polishmaster / Polishstar.

Once your equipment is upgraded, MCS Printtec will be capable to run a 24/7 technical support, regardless wherever we are on the road for you, our esteemed customers.

Quite often we face that the reason for a machine error or machine breakdown is a wrongly set parameter, disadjusted machine calibration, defective valve or similar reasons. Such errors can be quickly determined and solved online, via Remote Access.

The experience we have made in the past twelve months, is persuading not just our customers, but us as well. We have learned, that this is the only way to reduce machine breakdown times drastically. We are on the track!

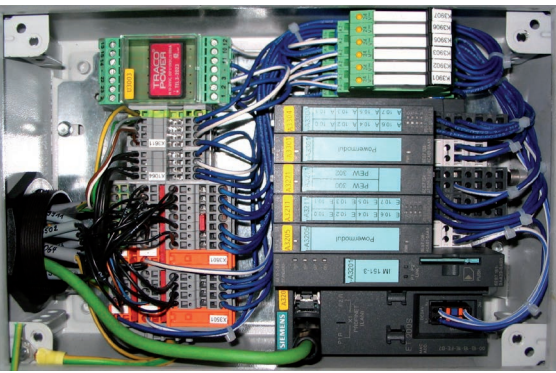
## Experience on three continents

Retrofitted machines (= preowned machines, fully rebuilt, control systems and actuators/sensors exchanged) in production in Europe, Russia and the Middle East.



Our retrofitted machines run on a multi-lingual software and can be installed on every continent in the desired language. The existing machines have been modified and upgraded at customers site or during a general overhaul in our company in Switzerland.





The multilingual and remote accessible software has proven its performance one dozen times already on three different continents. On all installed machines, the breakdown times have been reduced drastically.

Thereof is resulting:

- Optimized production planning
- Accurate delivery time keeping of the customers gravure cylinders
- Higher customer satisfaction
- Higher productivity of machines and Operators
- Better efficiency of the equipment, quicker return-on-investment
- Improved work atmosphere

## We have started-up the new year

New innovative ideas and products are ready to be launched.

Since Jan. 7, 2013 our business holidays are over and we are back at work. Very optimistic we are looking forward to the new year 2013. Our new ideas and improvements are already born. During this year we will surprise you with new ideas and inventions. Be ready for the next generation of rotogravure cylinder manufacturing possibilities with your existing, as well as with new equipment!

At this point, we like to thank you – our esteemed customers – for the faith and confidence you have put into our enterprise during the whole year 2012. It was a challenge for our entire Staff, to master this significantly increased volume of orders you have placed in our company. We simply want to say: thank YOU!

**We wish you a happy new year 2013, success in the business and joy and happiness in your private life!**

In case of any request please contact Mrs. Monika Plieninger or Mr. Andreas Bühler.  
MCS Printtec, Industriestrasse 14, CH-8240 Thayngen  
phone: +41 52 640 08 54  
fax: +41 52 640 08 55  
mcs@mcsprinttec.com

This newsletter we send you, in order to keep you updated about the latest news in the gravure market. In case you don't want to receive our newsletter anymore, simply return this mail with the information "Unsubscribe" in the subject line. The above information's are exclusively reserved for the esteemed clientele and future customers in the rotogravure business. Copying, public distribution and measure is prohibited. Roto-Shine has a shelf live of 2 - 3 years, when it's stored appropriately

